

FMB & QHB

Intelligent Lithium-ion Battery Packs

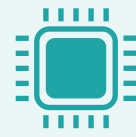
The FMB and QHB intelligent lithium battery packs from MEAN WELL EUROPE provide flexible energy solutions with CAN-based communication, broad charger compatibility, and extensive customization options including connectors and communication interfaces, enabling seamless integration across diverse systems.

Both series are compatible with MEAN WELL and other major charger brands.

The FMB series focuses on scalable, expandable energy storage with a highly flexible design and parallel operation capability.

The QHB series is designed for demanding environments, featuring a rugged fiber-reinforced enclosure with IP-rated protection for reliable performance in harsh conditions.

Engineered & Manufactured in Europe 



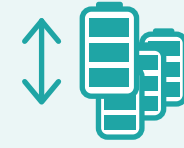
SIL 1 – rated BMS



IoT Connectivity



Scalable up to 16 Units in Parallel



Hot-swapping



Real-time Data and Dynamic Power Mapping



Flexible Mounting in Any Orientation



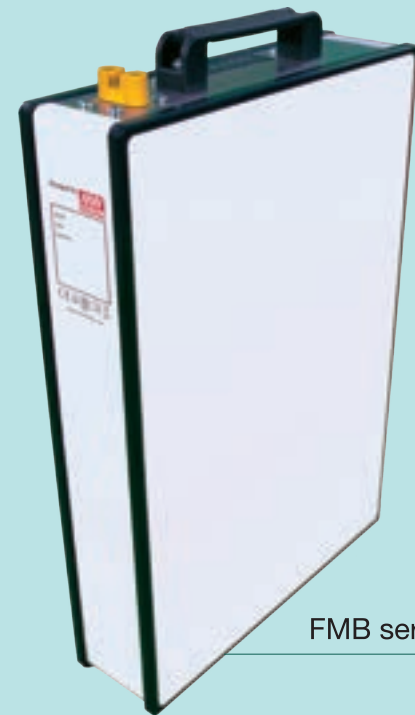
Rugged IP67 housing
*QHB series only



Customizable Connectors, Software and Decals
*FMB series only



CANopen Support



FMB series



QHB series

FMB Series

Flat-Type Modular Lithium Battery Pack for Scalable Energy Storage

Key Features

CANBus (CANopen)	Wireless	Heater	(Hot)Swapping	BMS Type	Pre-charge	Weight	Dimension	IP
V	V	V	V	Nor-on / Nor-off	Nor-off	10.2-11.8Kg	265 x 74 x 410 mm*	54 (max)**

* Dimensions vary slightly between battery packs
** IP rating varies with connector choice.

Product Range Overview

Voltage		LFP		NMC		
		Configuration	Capacity	Configuration	Capacity	Configuration
12V	Configuration	4S 24P				
	Capacity	120Ah*				
24V	Configuration	8S 12P	7S 27P	7S 20P		
	Capacity	60Ah**	70.2Ah	115Ah*		
36V	Configuration	12S 8P	10S 14P			
	Capacity	40Ah*	80.5Ah*			
48V	Configuration	16S 6P	13S 10P	14S 13P	14S 13P	14S 10P
	Capacity	30Ah**	57.5Ah*	33.8Ah	43.5Ah	57.5Ah*
60V	Configuration		16S 8P			
	Capacity		46Ah*			

* Engineered for certification compliance.
** Will be available in 2026 Q3

Connectors



AS150
Power/data/keypin



SB50 + M12 Data
Power/data/keypin



Weipu 7 Pin
Power/data/keypin



Custom
Any connector configuration that fits the faceplate

QHB Series

Cube-Type Rugged Lithium Battery Pack for Harsh Environments

Key Features

CANBus (CANopen)	Wireless	Heater	(Hot)Swapping	BMS Type	Pre-charge	Weight	Dimension	IP
V	V	V	V	Nor-on / Nor-off	Nor-off	7.3-11.8Kg	197 x 167 x 296.5 mm*	67(max)**

* Dimensions vary slightly between battery packs
** IP rating varies with connector choice.

Product Range Overview

Voltage		LFP		NMC		
		Configuration	Capacity	Configuration	Capacity	Configuration
12V	Configuration	4S 14P	4S 24P			
	Capacity	70Ah*	120Ah*			
24V	Configuration	8S 12P		7S 24P	7S 20P	
	Capacity	60Ah**		62.4Ah	115Ah*	
36V	Configuration	12S 8P		10S 14P		
	Capacity	40Ah*		80.5Ah*		
48V	Configuration	16S 6P		13S 13P	13S 13P	14S 10P
	Capacity	30Ah**		33.8Ah	43.5Ah	57.5Ah*
60V	Configuration			16S 8P		
	Capacity			46Ah*		

* Engineered for certification compliance.
** Will be available in 2026 Q3



AS150
Power/data/keypin



M5 Terminals + XLR 3P
Power only



M5 Terminals + XLR 3P + M5 12 Pin Data
Power/data/keypin

Applications

Marine | Industrial automation | E-scooters | Agriculture | Emergency vehicles



Compatible with MEAN WELL Smart Chargers



NPB Series



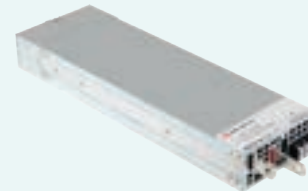
NPP Series



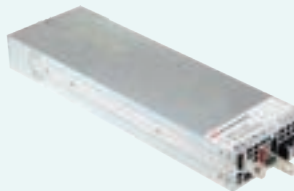
BIC Series



NTN - 5K



DBU - 3200



DPU - 3200



NSP - 1600/3200

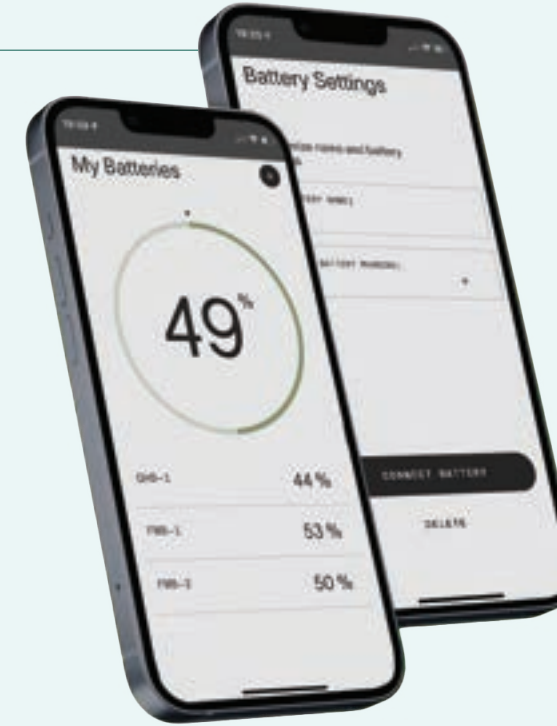


HEP - 1000/2300

Charged by MEAN WELL

MW Battery Intelligence

Charged By MEAN WELL provides real-time Insights for your battery devices, perfect for fleet owners. Compatible with Bluetooth 4.2, it allows you to monitor the State of Charge (SOC) of all connected batteries simultaneously on one screen. Easily Identify specific batteries as their LED Indicators flash upon connection. Optimize your battery management with “Charged By MEAN WELL”.



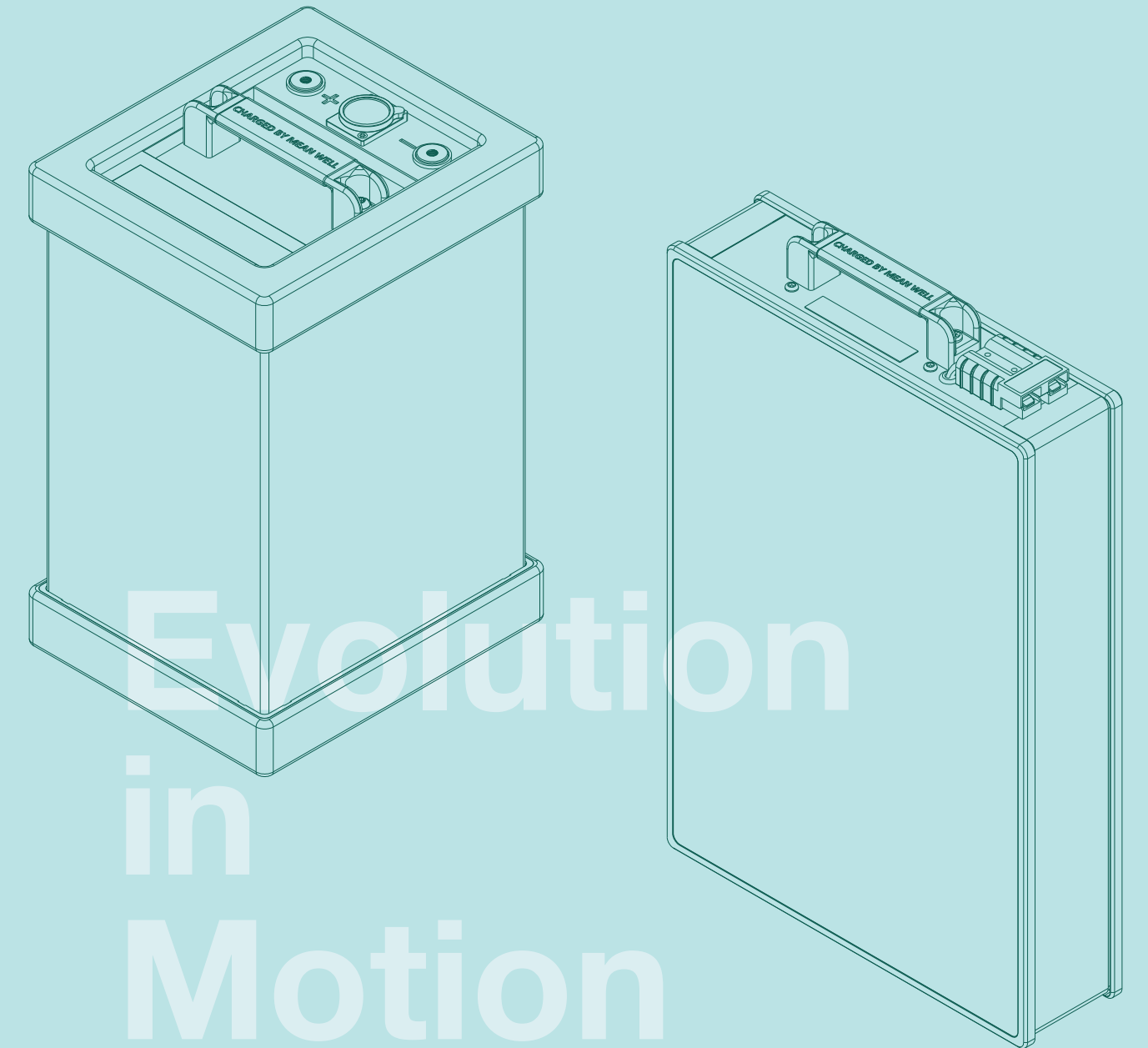
Apple Store



Google Play

High-Performance NMC and LFP Solutions

Engineered & Manufactured in Europe
The Definitive Total Solution



MEAN WELL EUROPE N.V.

+31-20-758-6000
Langs de Werf 8, 1185XT Amstelveen, The Netherlands
<https://meanwellpowersupplies.com>
contact@meanwell.eu



MEAN WELL
Specifications



CAN
Manual

Also compatible with other major charger brands.
For more information, scan the CAN Manual QR code
or contact MEAN WELL EUROPE representative.

Charged by 